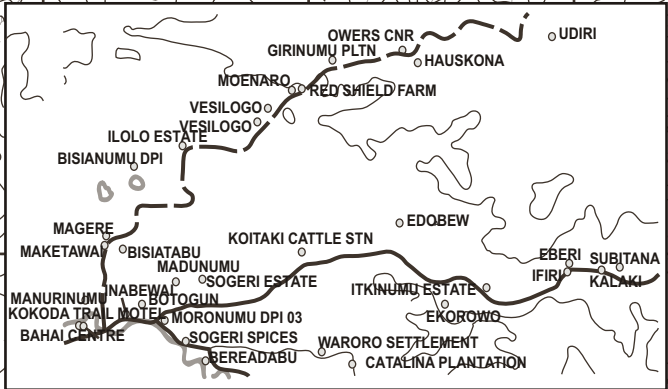
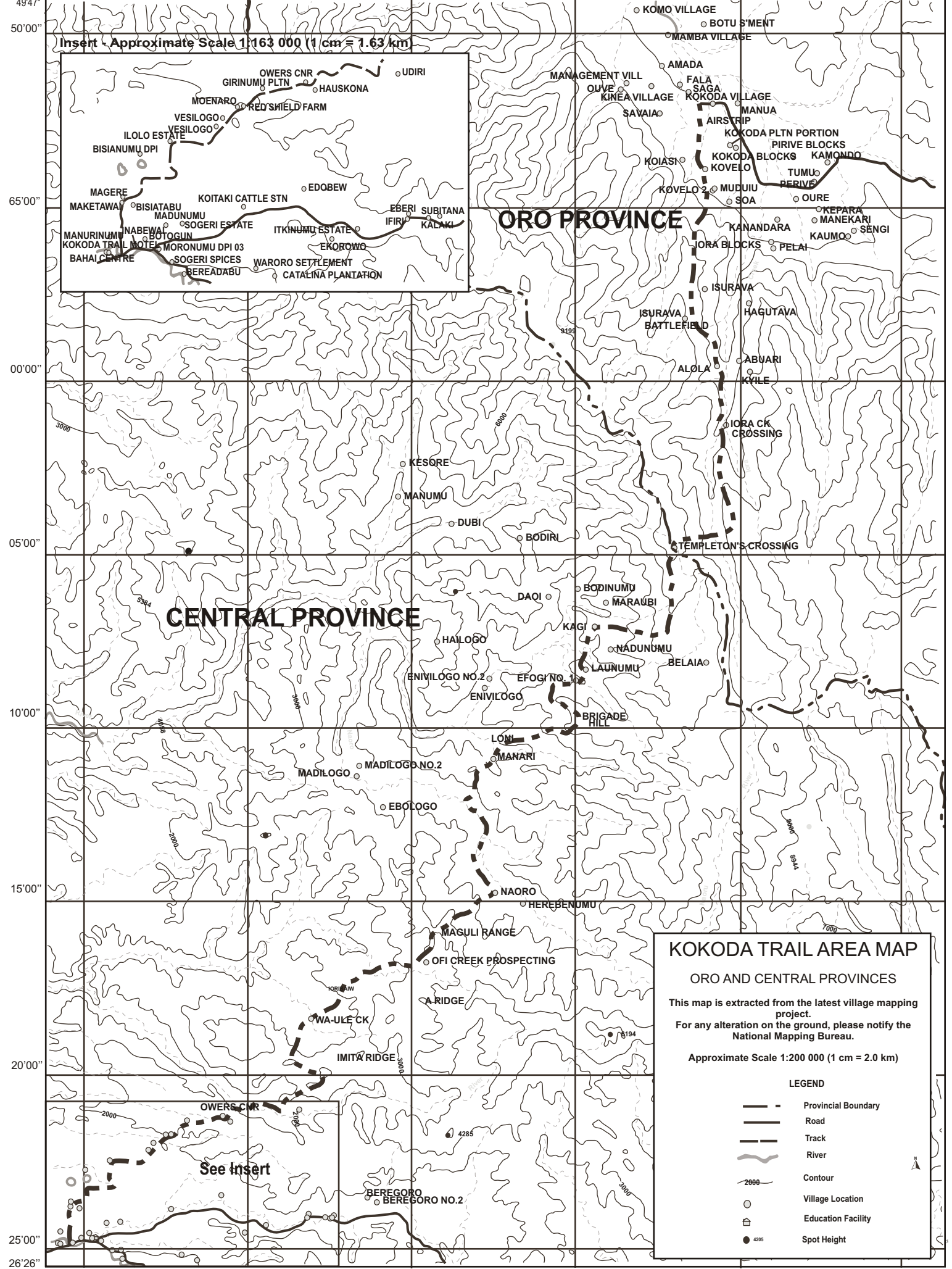


147°23'47" 147°25'00" 147°30'00" 147°35'00" 147°40'00" 147°45'00" 147°50'00"



Insert - Approximate Scale 1:163 000 (1 cm = 1.63 km)

**KOKODA TRAIL AREA MAP**  
**ORO AND CENTRAL PROVINCES**

This map is extracted from the latest village mapping project.  
 For any alteration on the ground, please notify the National Mapping Bureau.

Approximate Scale 1:200 000 (1 cm = 2.0 km)

**LEGEND**

- Provincial Boundary
- Road
- Track
- River
- Contour
- Village Location
- Education Facility
- Spot Height

147°23'47" 147°25'00" 147°30'00" 147°35'00" 147°40'00" 147°45'00" 147°50'00" 147°